

How to correct your mistake if you set up JCreator incorrectly

1. In JCreator's main menu, choose **Configure⇒Options**.

The Options dialog opens.

2. In the Options dialog, select **JDK Profiles**. (See Figure 1.)

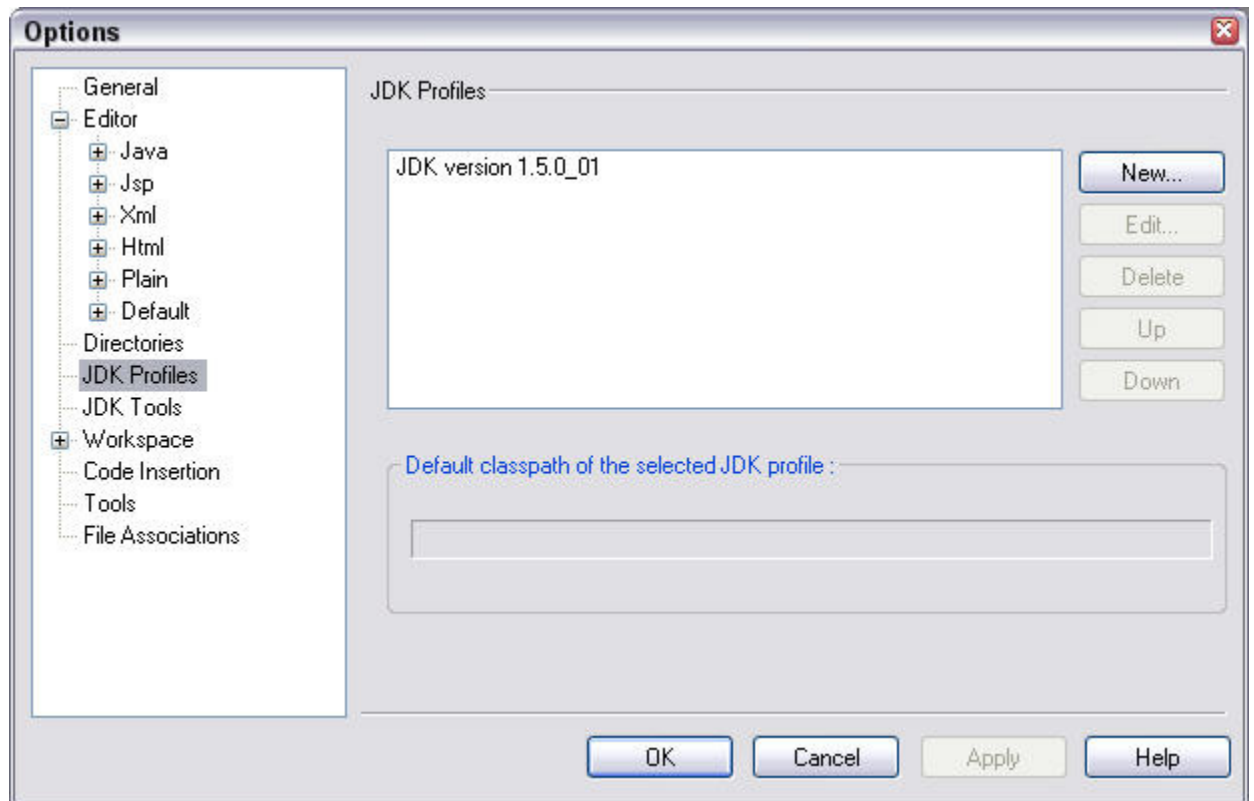


Figure 1: The Options dialog.

On the right side of the Options dialog, you see the name of a JDK profile. The name is something like **JDK version 1.5.0_01**.

3. Click **New**.

The **Select Path** dialog appears.

4. In the Select Path tree, navigate to your computer's **Java home directory**.

My Java home directory is named `C:\Program Files\Java\jdk1.5.0_01`. Most likely, your Java home directory's has a similar (but slightly different) name.

5. **Click OK.**

The JDK Profile dialog appears. (See Figure 2.) This dialog list the names of several classes, sources, and documentation files.

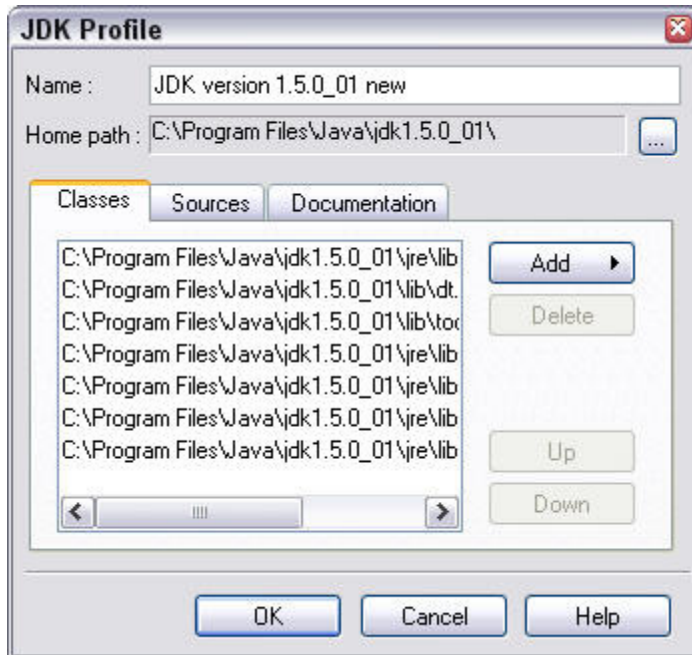


Figure 2: The JDK Profile dialog.

6. **In the JDK Profile dialog's Name field, type a name for your new profile.**

In Figure 2, I add the word **new** to the default name.

7. **Click OK to dismiss the JDK Profile dialog.**

The Options dialog comes to the fore. On the right side of the Options dialog, you see a brand new JDK profile. (See Figure 3.)

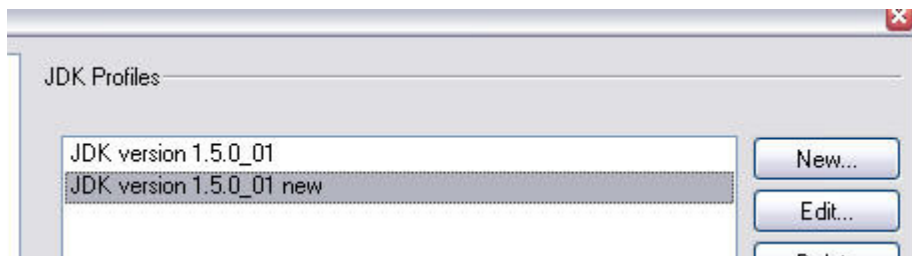


Figure 3: The JDK Profile dialog contains a new profile.

8. **In the Options dialog, select the new profile.**

9. **Click Up.**

Your newly created profile moves up in the list of profiles. (See Figure 4.)

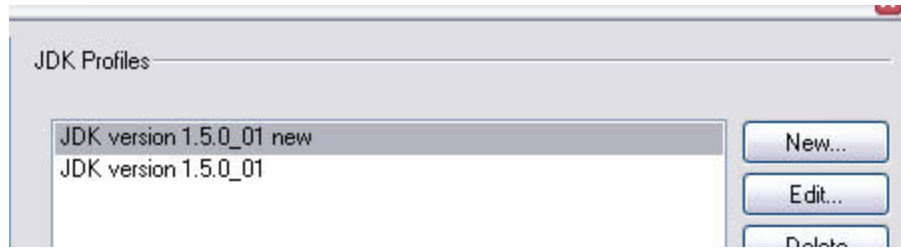


Figure 4: Your new profile moves up to become the default profile.

10. Click **Apply**, and then click **OK**.