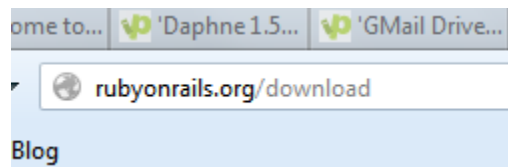


Installing and Using Rails 3.2

on Windows using the Command Prompt

Visit rubyonrails.org/download



Click the installer link



Get Ruby on Rails in no time

Rails is low on dependencies and prides itself on shipping with most everything you need in the box. To get started, just install Ruby, the language, and RubyGems, the package manager.

Ruby

We recommend **Ruby 1.9.3** for use with Rails. Rails 3.2 is the last one that supports Ruby 1.8. Ruby 1.8.6 and earlier are not supported, neither is version 1.9.1.



Source: Compile it yourself

Windows installer: Ruby, popular extensions, editor

OS X 10.5+: Included with developer tools
(then do "gem update rails")

Select the latest installer version

RUBYFORGE
by Ruby Central

Home My Page Project Tree Code Snippets

Summary News **Files**

Files | Admin

Below is a list of all files of the project. Before download

Package	Release &
---------	-----------

1. RubyInstaller

1.8.7-p370

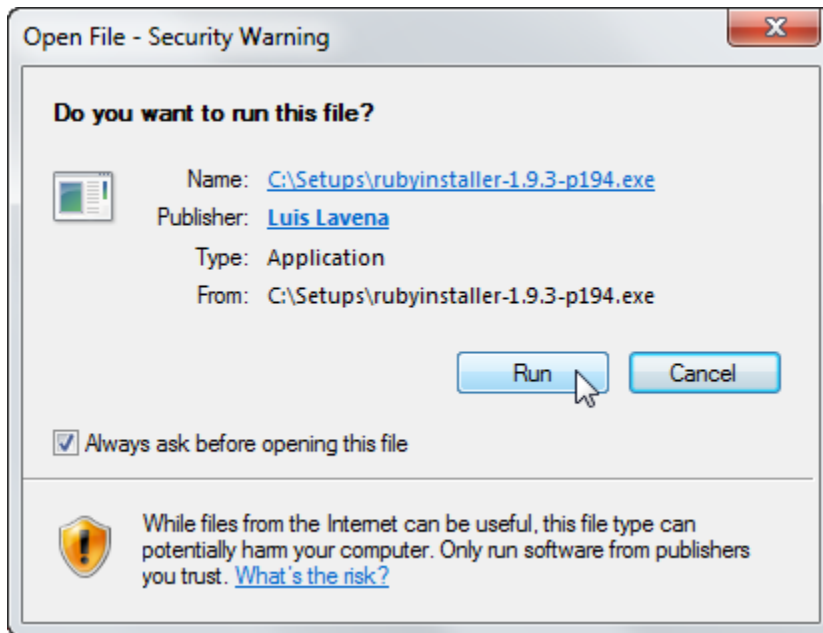
- ruby-1.8.7-p370-doc-chm.7z
- ruby-1.8.7-p370-i386-mingw32.7z
- rubyinstaller-1.8.7-p370.exe

1.9.3-p194

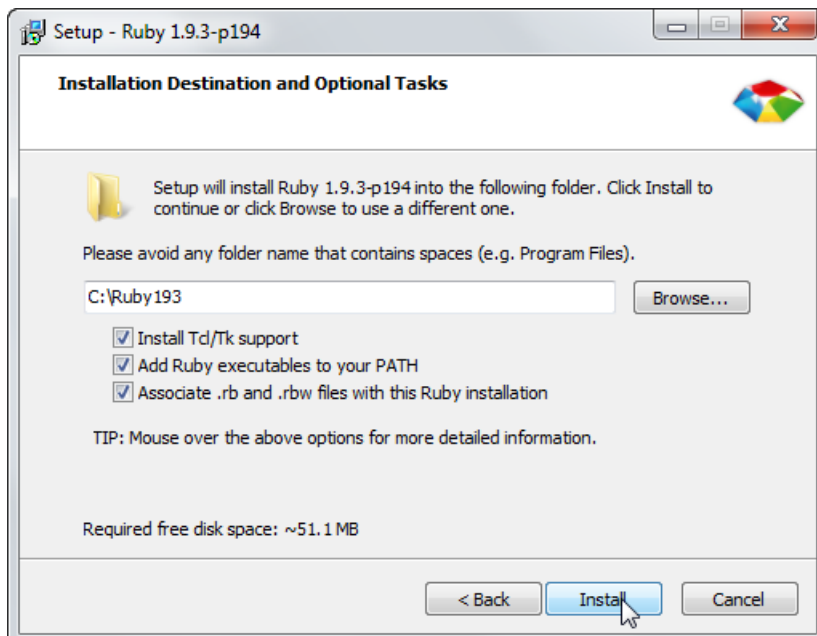
- ruby-1.9.3-p194-doc-chm.7z
- ruby-1.9.3-p194-i386-mingw32.7z
- rubyinstaller-1.9.3-p194.exe

1.8.7-p370

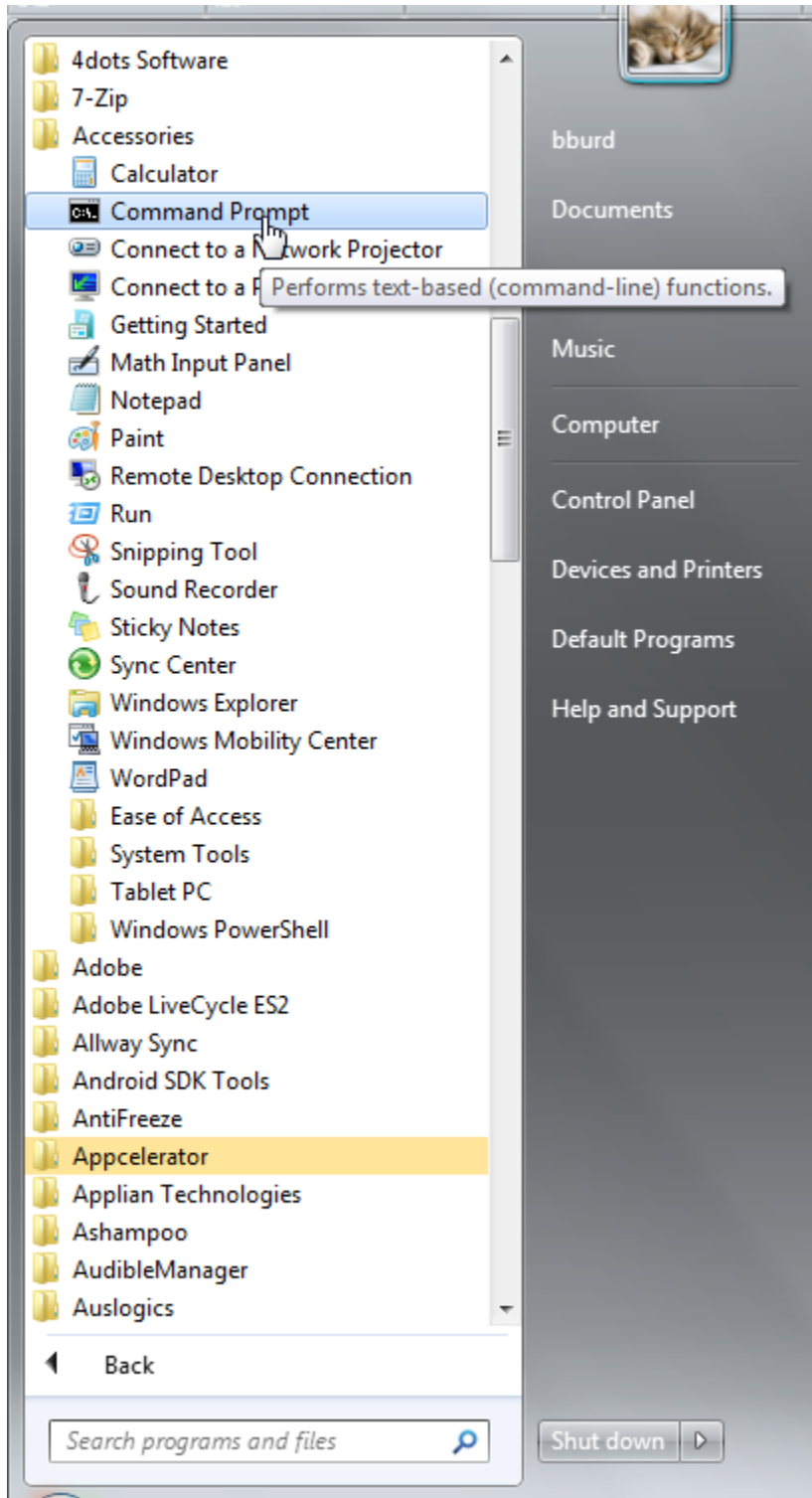
Run the downloaded installation file



Check all the checkboxes (and remember where Ruby is being installed... e.g., in directory C:\Ruby193)



Open a Command Prompt window



In the Ruby installation directory, type `gem update --system` and then press Enter

```
C:\Ruby193>gem update --system
Updating rubygems-update
Fetching: rubygems-update-1.8.24.gem (100%)
Successfully installed rubygems-update-1.8.24
Installing RubyGems 1.8.24
RubyGems 1.8.24 installed

== 1.8.24 / 2012-04-27

* 1 bug fix:

  * Install the .gem files properly. Fixes #320
  * Remove OpenSSL dependency from the http code path

-----

RubyGems installed the following executables:
  C:/Ruby193/bin/gem

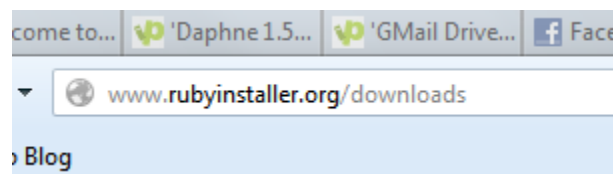
RubyGems system software updated
```

In the Ruby installation directory, type `gem install rails` and then press Enter


```
C:\Ruby193>gem install rails
Fetching: rails-3.2.6.gem (100%)
Successfully installed rails-3.2.6
1 gem installed
Installing ri documentation for rails-3.2.6...
file 'lib' not found
Installing RDoc documentation for rails-3.2.6...
file 'lib' not found

C:\Ruby193>
```

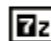
Visit www.rubyinstaller.org/downloads



Click the link to download the Development Kit

 [Ruby 1.8.7-p370 documentation \(CHM format\)](#)

DEVELOPMENT KIT

 [DevKit-tdm-32-4.5.2-20111229-1559-sfx.exe](#)

MD5 Checksums

Run the Development Kit's .exe file. Then, in the Command Prompt window, go to the directory in which the Development Kit is installed. Type `ruby dk.rb init` and then press Enter

```
C:\RubyDevKit>ruby dk.rb init
[INFO] found RubyInstaller v1.9.3 at C:/Ruby193

Initialization complete! Please review and modify the auto-generated
'config.yml' file to ensure it contains the root directories to all
of the installed Rubies you want enhanced by the DevKit.
```

Look at the new config.yml file. Check to make sure that the name of the directory in which Ruby is installed (in these screenshots, C:/Ruby193) appears in the file and is not preceded by a pound sign (#).

```
C:\RubyDevKit>type config.yml
# This configuration file contains the absolute path locations of all
# installed Rubies to be enhanced to work with the DevKit. This config
# file is generated by the 'ruby dk.rb init' step and may be modified
# before running the 'ruby dk.rb install' step. To include any installed
# Rubies that were not automagically discovered, simply add a line below
# the triple hyphens with the absolute path to the Ruby root directory.
#
# Example:
#
# ---
# - C:/ruby19trunk
# - C:/ruby192dev
#
# ---
- C:/Ruby193
C:\RubyDevKit>
```

Type `ruby dk.rb install --force` in order to install the Development Kit

```
C:\RubyDevKit>ruby dk.rb install --force
[INFO] Updating convenience notice gem override for 'C:/Ruby193'
[INFO] Installing 'C:/Ruby193/lib/ruby/site_ruby/devkit.rb'
C:\RubyDevKit>
```

Create the directory that will contain your Rails projects (in this screenshot, the \Rails directory). Use the `cd` command to go to the Rails directory. Then type `rails new company` (to create a new Rails project named company).

```
C:\Ruby193>md \Rails
C:\Ruby193>cd \Rails
C:\Rails>rails new company
  create
  create  README.rdoc
  create  Rakefile
  create  config.ru
  create  .gitignore
  create  Gemfile
  create  app
  create  app/assets/images/rails.png
  create  app/assets/javascripts/application.js
  create  app/assets/stylesheets/application.css
  create  app/controllers/application_controller.rb
```

... several minutes later you'll see something like this ...

```
Installing coffee-rails (3.2.2)
Installing jquery-rails (2.0.2)
Using rails (3.2.6)
Installing sass (3.1.20)
Installing sass-rails (3.2.5)
Installing sqlite3 (1.3.6)
Installing uglifier (1.2.6)
Your bundle is complete! Use 'bundle show [gemname]' to see where a bundled gem
is installed.
Post-install message from rdoc:
Depending on your version of ruby, you may need to install ruby rdoc/ri data:

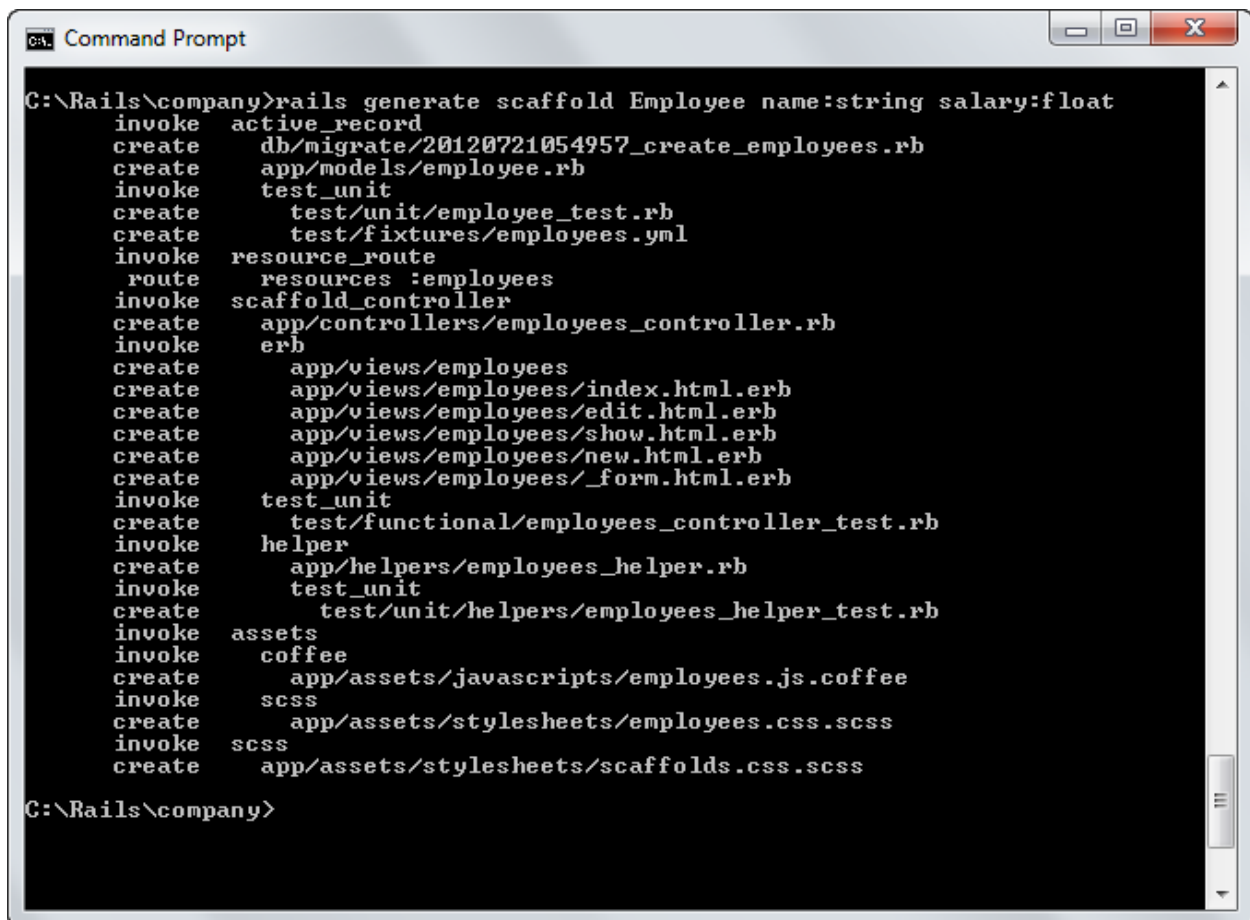
<= 1.8.6 : unsupported
= 1.8.7 : gem install rdoc-data; rdoc-data --install
= 1.9.1 : gem install rdoc-data; rdoc-data --install
>= 1.9.2 : nothing to do! Yay!

C:\Rails>
```


In the newly created C:\Rails\company directory, type
rake db:create and then press Enter

```
C:\Rails\company>rake db:create
db/development.sqlite3 already exists
C:\Rails\company>
```

Still in the C:\Rails\company directory, type
rails generate scaffold Employee name:string salary:float
and then press Enter



```
ca. Command Prompt
C:\Rails\company>rails generate scaffold Employee name:string salary:float
  invoke  active_record
  create  db/migrate/20120721054957_create_employees.rb
  create  app/models/employee.rb
  invoke  test_unit
  create  test/unit/employee_test.rb
  create  test/fixtures/employees.yml
  invoke  resource_route
  route   resources :employees
  invoke  scaffold_controller
  create  app/controllers/employees_controller.rb
  invoke  erb
  create  app/views/employees
  create  app/views/employees/index.html.erb
  create  app/views/employees/edit.html.erb
  create  app/views/employees/show.html.erb
  create  app/views/employees/new.html.erb
  create  app/views/employees/_form.html.erb
  invoke  test_unit
  create  test/functional/employees_controller_test.rb
  invoke  helper
  create  app/helpers/employees_helper.rb
  invoke  test_unit
  create  test/unit/helpers/employees_helper_test.rb
  invoke  assets
  invoke  coffee
  create  app/assets/javascripts/employees.js.coffee
  invoke  scss
  create  app/assets/stylesheets/employees.css.scss
  invoke  scss
  create  app/assets/stylesheets/scaffolds.css.scss
C:\Rails\company>
```

Still in the C:\Rails\comany directory, type `rake db:migrate` and then press Enter

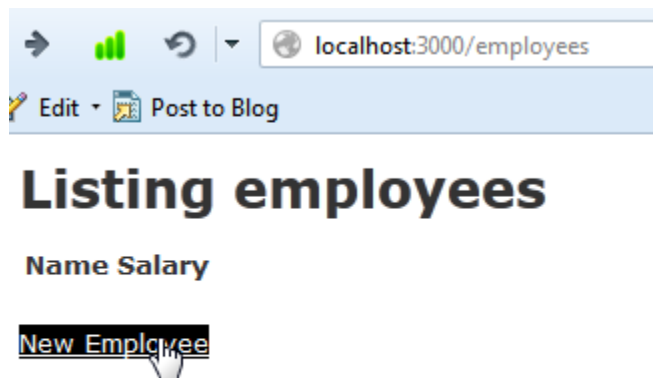
```
C:\Rails\company>rake db:migrate
== CreateEmployees: migrating =====
-- create_table(:employees)
   -> 0.0030s
== CreateEmployees: migrated (0.0040s) =====

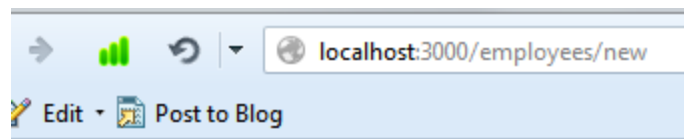
C:\Rails\company>
```

Still in the C:\Rails\comany directory, type `rails server` and then press Enter

```
C:\Rails\company>rails server
=> Booting WEBrick
=> Rails 3.2.6 application starting in development on http://0.0.0.0:3000
=> Call with -d to detach
=> Ctrl-C to shutdown server
```

Visit `localhost:3000/employees` and experiment with the new Web application



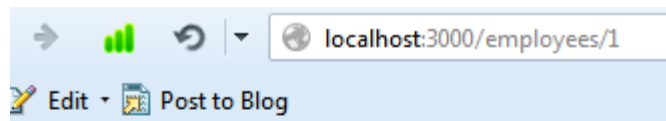


New employee

Name

Salary

[Back](#)



Employee was successfully created.

Name: Barry

Salary: 100000000.0

[Edit](#) | [Back](#)